



RETROFIT
CONSTRUCTION



COMPANY PROFILE

Making Buildings Become Intelligent



ABOUT US

Retrofit is a leading construction company, situated in the heart of Cairo, Egypt, with a strong reputation for delivering an outstanding service in Integrated Construction and Technical Services Egypt Wide.

FOUNDER'S MESSAGE



It is our pleasure to introduce our company “**RETROFIT**” for Construction” Prequalification's looking forward for a mutual co-operation with your honorable company.

RETROFIT is an Egyptian company which was founded in 2016, with future vision to be one of the prestigious companies in Egypt.

Now and after all these years of success, **RETROFIT** company had a very considerable experience in its field, more over it is ranked as 1st Class Electromechanical, Civil and Finishing Company in the Egyptian Federation for Construction & Building Contractors which provide confidence to the company to execute various Mega projects without limitation, such as: - Smart Village Buildings, Factories, Hotels, Social mega clubs, Mall ...etc.

Quality, both in terms of management and services has always been the main objective of **RETROFIT** company.

Finally, I'd like to personally thank you for taking the time to explore **RETROFIT** services and all that we stand for. We're proud of our achievements but what keeps us going is our overwhelmingly positive client feedback.

Eng. Magdy Sadek

Chairman - Retrofit Construction

Eng. Ahmed Elalfy

CEO - Retrofit Construction





OUR VISION:

Our Vision is to be one of the biggest regional construction companies while placing special emphasis on the company's manpower which sustains the highest quality and skills to reach the customer's satisfaction.

OUR MISSION:

Our mission is to create a healthy spirit of teamwork while effectively and efficiently planning, executing and following-up the projects based on the highest quality and the utilization of all the updated materials to obtain the customer's satisfaction in addition to place special emphasis on the development of external and internal relations.

OUR VALUES:

Our people are at the frontline of our priority and together we created values that are built to outperform in our role in the Construction Industry.





Why Retrofit Construction Company?

We are thankful for the many sectors, businesses and organisations who trust and rely on us to provide them with our wide range of advanced services that are integral to their success.

- We do and always aim to provide the technical and maintenance options that support your day to day business.
- We have a reliable and robust team operating throughout the Egypt.
- Our innovative and unique Service Delivery Strategy means all of our clients get a 100% personalised and tailor-made service to meet their needs.
- Our no-obligation value-add services are what keeps our client retention very high.
- We provide round the clock, fast and highest standards.
- Munication systems back all of retrofit services.
- With our service experience, we focus on delivering scalable, innovative, and value for money solutions in single, multiple and integrated models.
- Retrofit is a 'Safe Contractors' and is ISO and OHSAS certified and our practices and insurances, enable us to work in the most challenging environments.
- We plan and look for every opportunity to prolong the lifeline of your property or investment.

OUR SUCCESS PARTNERS

At **RETROFIT**, we foster close collaboration with our subcontractors from the project's inception, aligning their expertise with the project's requirements. Our construction endeavors encompass various trades including civil, architectural, mechanical, electrical, and more. Our subcontractors, integral to our success, gain from our commitment to:



SAFETY

At **RETROFIT**, safety leadership is defined by our continuous commitment to achieving a goal of zero incidents on every project. Our proactive approach ensures that every individual on a **RETROFIT** jobsite operates with the utmost safety consciousness, ensuring that everyone returns home safely. Our commitment to safety management extends to our subcontractors, benefiting from **RETROFIT**'s comprehensive understanding and fixed dedication to safety practices.

QUALITY MANAGEMENT

RETROFIT's commitment to a robust quality management program extends to our valued subcontractors. This dedication ensures that both **RETROFIT** employees and subcontractors possess an in-depth understanding of project drawings, specifications, codes, testing protocols, and relevant standards. This comprehensive approach contributes to the overall success of our projects and ensures a consistently high level of quality across all endeavors.

DIVERSITY

At **Retroofit**, we firmly recognize the pivotal role of diversity in fostering innovation, and we hold in high regard the unique array of experiences, viewpoints, and proficiencies that our subcontractors and partners contribute. Throughout our entire organization, we actively pursue avenues to collaborate with small-scale and diverse subcontractors within our projects. Our commitment extends to bolstering their accomplishments through dedicated mentorship, comprehensive support, and the exchange of industry best practices.

SECTORS WE SERVE

Residential & Communities

We offer flexibility in solutions to maintain your premise and provide tailor-made contracts and a promise for a high-quality standard of work.



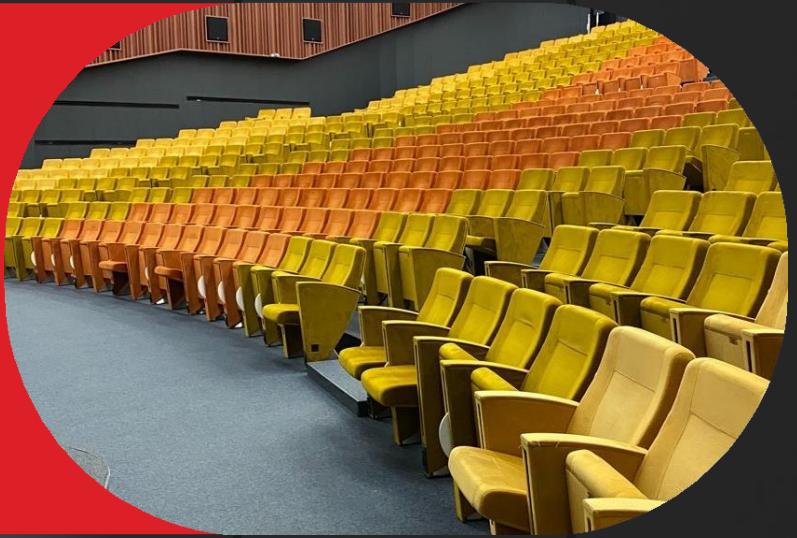
Commercial/Retail

A full facilities management service include technical, staffing, fire safety, lifts, facade cleaning, pest control services, parking systems, as well as general housekeeping.



Education

education sector, our facilities management services include general maintenance, housekeeping services, planned preventative maintenance, HK, security staffing, fire and safety risk assessments as well as energy management.



Leisure & Hospitality

Our clients within the leisure and hospital- ity sectors require a range of soft services, hard services, housekeeping, staffing, specialized services.





CIVIL CONSTRUCTION

Civil Construction is the creation of infrastructure involving anything to do with water, earth or transport. It is a branch of Civil Engineering involved with the maintenance, design and construction of both natural and physically built environments such as roads, railways, buildings, water reservoirs, subdivisions, airports, bridges, sewer systems, tunnels and dams. The industry consists of the individuals, companies and other interested parties who are involved in the planning, creation and designing of our infrastructure.

Tasks performed in the industry include the planning, creation and maintenance of public infrastructure - basically anything that will make the lives of people easier. These include:

- Liaising with governments, clients and other professionals
- Creating cost estimates and contracts
- Tendering the contracts and hire contractors

OUR SERVICES

HARD SERVICES

1. MECHANICAL SERVICES

HVAC

We carry out general maintenance, preventive maintenance, installation of mechanical assets, attending to reactive complaints & troubleshooting.



Our team pays particular attention to generators, motors, gate barriers, AC units and industrial fans and all mechanical supporting assets.

HVAC systems is the most essential for the successful operation of our client's businesses, and we provide a wide range of services, including the management of fresh air handling units (FAHU), Air handling units (AHU), Fan cooling units (FCU) and chillers and heat exchangers.



Our HVAC services are available to both residential and commercial properties, and we always ensure our HVAC services are delivered to the highest standard to meet your expectations.

We deliver our mechanical services within a range of sectors, including residential, retail, hospitality and commercial establishments. We carry out general maintenance and preventative maintenance, fire and risk assessments, as well as installing fire alarms. This is why it is essential to have a competent and experienced **RETROFIT** team onboard.

FIRE FIGHTING

It is essential to protect your property or commercial space from fires, both for the protection of lives and property. As part of our specialised collaborative services provided by our partners, we offer a range of services including firefighting maintenance and a fire fighting service.



The professional team will take the necessary precautions to protect your property from fires and keep track of the Firefighting FM200 and its associated risks.

PLUMBING SERVICES

We are highly experienced and well known for delivering high-quality plumbing services to our clients within a range of sectors. We can adapt to suit the needs of our clients, including upgrades and repairs, as well as installations.



We are the first port of call for the plumbing needs of our clients, delivering an exceptional standard of service.

INFRASTRUCTURE

Infrastructure is the basic facilities and system that serves a country, region or community. Infrastructure can be classified as soft or hard and both are essential to the economy and the quality of life in a community.



Investing in sustainable basic infrastructure is essential to improving the living standards of communities around the world. And when we talk about fundamentals, we mean fundamental factors.

Infrastructure is defined as the basic physical systems of a business, region, or nation and often involves the production of public goods or production processes



2. ELECTRICAL SERVICES

POWER SYSTEMS

RETROFIT specializes in risk audit through to preventative electrical maintenance for your premise.



Our expert services include maintaining distribution boards, control panels and low voltage (LV) panels, capacitor banks as well as lighting systems.

We are also able to offer specialist solutions for our clients, including changing lighting to more energy-efficient ones.

LIGHT CURRENT SYSTEMS

Surveillance Systems (CCTV)

CCTV Surveillance Systems allow an organization to remotely monitor all of its premises and locations, leading to a safer and more secure work environment and protection against crime and theft.



Fire Alarm Systems

Fire Alarm Systems are crucial health and safety measure that ensures a safer work environment and the safety of personnel, while facilitating loss control and disaster management for enterprise facilities and assets.

Telephone Systems

Telephone systems allow managers, company owners, and hospitals to facilitate the communication process within the facility, ensuring ease of use and saving time.



SUSTAINABILITY

Safety and Quality Assurance

Our strength is in our people and their skills, and that is why training is at the core of our success. Our management conducts audits for skills and safety knowledge within the team while instilling the responsibility for sustainability in each of our team members.

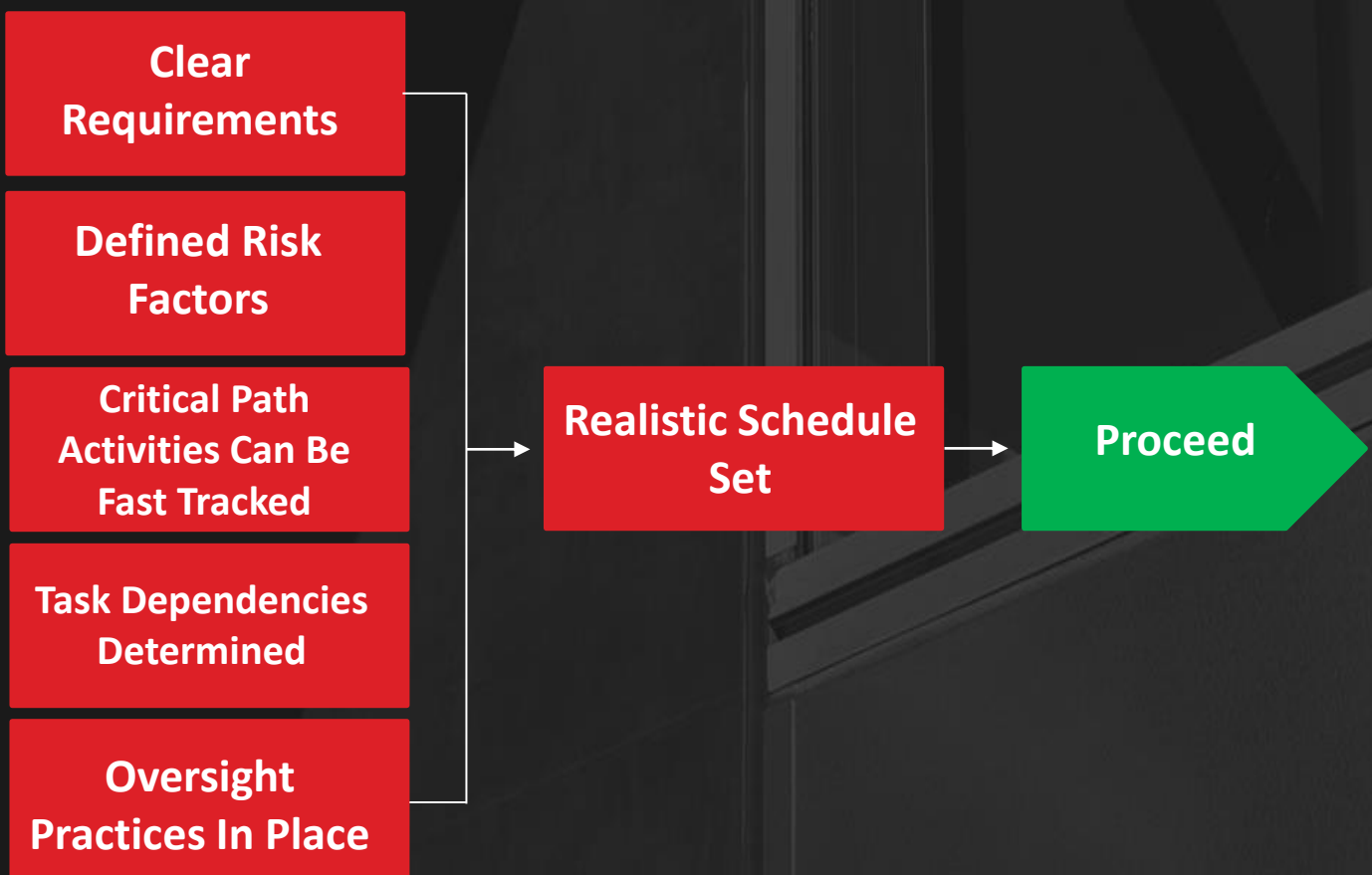
We take pride in having a robust health and safety policy, state of the art machinery, tools and equipment. We also set reasonable yet challenging KPI's with a scoring system to ensure an exceptional quality of technical services for our clients and a happy and healthy team.

Our Business Aim Of Delivering Buildings Of Excellent Quality And Value To Our Clients Aligns With Our Sustainability Priorities.

- We deliver staff training and development
- Our accident rates are low and we aim to become the Health and Safety leaders in the industry.
- We care for our clients and the environment; we look for opportunity to reduce water and energy at every property.

What Is Fast Tracking in Project Management ?

Project managers have a number of tools and techniques they can use to meet critical deadlines. One of those techniques is called fast-tracking – a method of accelerating a project to deliver the end product sooner. Fast-tracking in project management is a schedule compression technique often used alongside the crashing technique. Crashing is when additional resources are allocated to a project to speed up its completion.



We are a company specialized in fast track, and we have many other projects, so we have experience and workers.

Fast-tracking Construction Projects & Cost Overrun

Fast-Tracking

- The increasing preference of project owners and managers to fast-track construction proves the popularity of concurrent development in construction

Fast-Tracking

- Concurrent construction also has greater potential to impact the project development process than the traditional methods.

Fast-Tracking

- Potential problems is considered to be increased level of uncertainty.

Fast-tracking in project management refers to a method where tasks that would ordinarily be completed in sequential order are instead completed concurrently. Fast-tracking a project can indicate a number of things, including that the project is at risk of not finishing on time. However, it may also reflect an unrealistic deadline or even a desire to bring a product to market faster. To use fast-tracking in project management, you must first go over the critical path and identify which tasks can be performed parallel to one another. For example, when planning a party, you cannot hang up decorations if a venue has not first been chosen. These are two tasks that cannot run parallel to one another. However, in this same example, hanging up decorations and setting out the party snacks are two activities that can be done simultaneously to quicken the time to the end result.

FINISHES

HOME REMODELING

Home remodeling is the process of renovating or updating an existing home to improve its functionality, aesthetics, or value. It can involve a wide range of projects, such as kitchen and bathroom renovations, room additions, flooring upgrades, and outdoor living space construction.



One of the top home remodeling brands in Egypt is **RETROFIT**. With years of experience in the industry, **RETROFIT** has built a reputation for providing high-quality home renovation services to clients throughout the Egypt area.

If you're looking for a reliable and reputable home remodeling brand in Egypt, **RETROFIT** is definitely worth considering.



BATHROOM REMODELING

Bathroom remodeling is the process of renovating or upgrading a bathroom to improve its functionality, aesthetics, and comfort. It involves replacing or updating fixtures, cabinets, flooring, and other elements to create a more functional and appealing space.



RETROFIT is a reputable brand based in Egypt that offers bathroom remodeling services. They specialize in creating custom bathroom designs that reflect the unique style and preferences of their clients. Their team of experienced contractors uses high-quality materials and innovative techniques to deliver exceptional results that exceed their client's expectations.

Whether you are looking to update your bathroom for aesthetic reasons or to improve its functionality, **RETROFIT** can help. Their services include bathroom design, fixture and cabinet installation, flooring and tile work, and more.



KITCHEN REMODELING

Kitchen remodeling refers to the process of renovating or improving the functionality, appearance, and design of a kitchen. This can involve updating appliances, replacing cabinets and countertops, installing new flooring or lighting, and making other changes to enhance the overall look and feel of the space.



One company that offers kitchen remodeling services in Egypt is **RETROFIT**. This brand specializes in providing high-quality, personalized remodeling solutions for homeowners looking to transform their kitchens.

Whether you're looking to update an older kitchen, improve the functionality of your space, or create a whole new look, **RETROFIT** can help. With their expertise and commitment to quality, they can deliver a kitchen remodel that meets your needs and exceeds your expectations.



SOME OF PROJECTS

1- Saudi German Hospital Alex West



Different types of electrical work include installation of new electrical systems, maintenance and repair of existing systems, electrical inspections and testing, troubleshooting and locating faults, rewiring, fitting circuit breakers and fuse boxes, and installation of home appliances and security systems. Firefighting systems are crucial components of any building or facility. These systems are designed to detect, control, and extinguish fires swiftly and efficiently.

2- Alexandria University



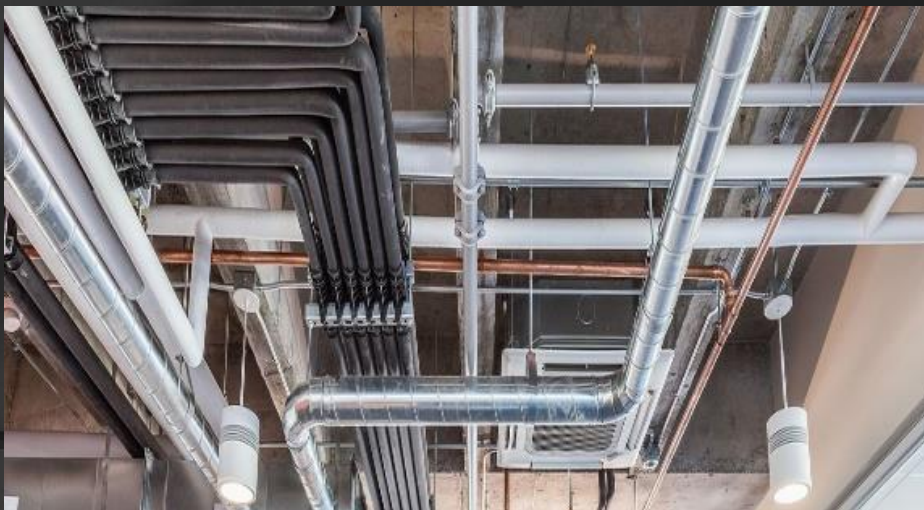
Kitchen ventilation is the branch of ventilation specialising in the treatment of air from kitchens. It addresses the problems of grease, smoke and odours not found in most other ventilation systems. Kitchen ventilation equipment includes an extractors hood and/or canopy, and a filtering system.



3- Al-Hayat Sharm Village



HVAC systems for hotels maintain desirable air circulation, temperatures, and humidity for guests, employees, and hotel patrons. According to hoteliers, the energy use of hotel guestrooms is about 40 - 80% of the total building energy consumption. Most hotels will have a central ventilation system designed to extract stale air from the rooms and pipe it to an air handling unit, which is located on the roof. Fresh air is then pulled in from outside and sent back into the building.



4- Ghibli raceway sharm



Hotels must deploy quiet commercial HVAC systems in order to mitigate any impact intrusive noise might have on guest experience. On a similar note, infrastructure changes may be required to hide vents, pipes, ducts, and cabling, ensuring that the system is as discreet and unnoticeable as possible. Reliability is, of course, key to ensuring sufficient heating, hot water, and ventilation, particularly in areas with high-energy demands like spa facilities. Any issues and downtime could cause temporary closures, so a robust and reliable system backed up by on-demand support is critical.



5- British American Tobacco



Large buildings may not have windows or have windows that are impossible to open. For this reason, ventilation equipment is installed to prevent stale air from accumulating in the building. When stores are especially crowded, or when many people attend a meeting in one room, opening windows and doors increases the efficiency of the ventilation equipment to actively change the indoor air. To maximize ventilation, we recommend that you first determine the type of ventilation equipment installed in your office or store and understand how it works and should be operated. Ventilation equipment installed in stores is mostly operated by their employees with a remote controller. Most people know the location of the air conditioner and its remote controller to adjust temperature and air volume according to desired temperature, while only a few people may know the location of the ventilation equipment. Even less know how to properly operate it.

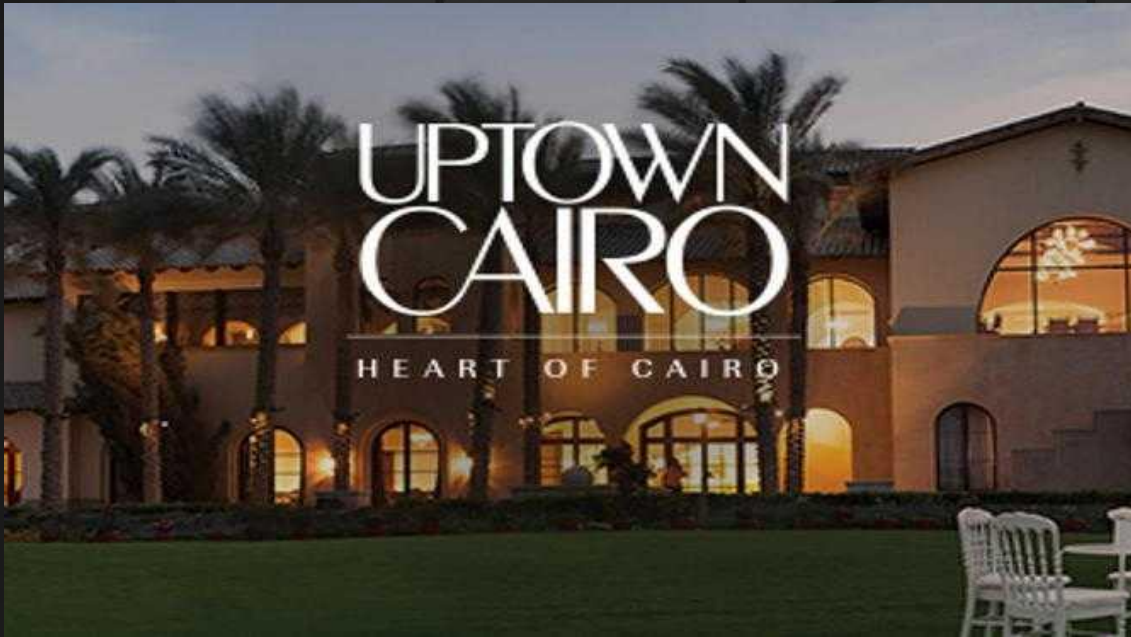
6- Emmar Misr Uptown Cairo



Touchup for 102 buildings Each of our Villas is carefully crafted to offer the highest level of comfort and convenience, with every detail considered to ensure your home is a true masterpiece. Touch up are used in the final part of the construction or manufacturing process, forming the final surface of an element. They can protect the element they finish from impact, water, frost, corrosion, abrasion, and so on, and they can be decorative.



7- Emmar Misr Uptown Cairo



Infra structure for #100 site (celesta) Where Infrastructure is the basic facilities and system that serves a country, region or community. Infrastructure can be classified as soft or hard and both are essential to the economy and the quality of life in a community.



8- Jupiter Rest

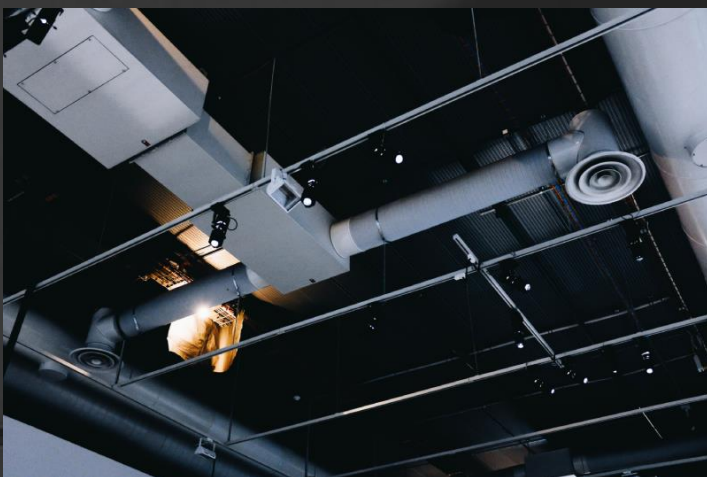


Split system, the evaporator coil is connected to a remote condenser unit using refrigerant piping between an indoor and outdoor unit instead of ducting air directly from the outdoor unit. Indoor units with directional vents mount onto walls, suspended from ceilings, or fit into the ceiling. Other indoor units mount inside the ceiling cavity so that short lengths of duct handle air from the indoor unit to vents or diffusers around the rooms. Split systems are more efficient and the footprint is typically smaller than the package systems. On the other hand, package systems tend to have a slightly lower indoor noise level compared to split systems since the fan motor is located outside. Fire suppression typically presents itself using fire suppression systems designed to extinguish the fire at the source and prevent spread. A fire suppression system is any product designed to stop a fire from growing and spreading. Fires can be extinguished, kept under control, or potentially avoided by using fire suppression systems. Typically they are activated by heat, smoke, or a combination of both. Various chemical clean agents are utilized in a pre-engineered fire suppression system to put out fires. Dry chemicals, chemical clean agents, or CO₂ may be used to put out Class A, B, and C fires. Pre-engineered systems can employ the same clean agents that are used in engineered systems, providing many of the same advantages. Wet chemical fire suppression systems are required for Class K fires. The kind of fire, as well as the particular hazard that needs protection, have a significant impact on the type of fire suppression agents utilized.

9- Coca-Cola Egypt



Direct expansion, or DX cooling, uses the principles of thermodynamics to transfer heat from one area to another through the evaporation and condensation of a refrigerant, which serves as the medium through which heat is captured and removed from one area and released in another.



10- Domty Factory



Utilizing exhaust and ceiling fans, opening windows and doors for air circulation, and insulating the warehouse can all help to reduce the temperature. Additionally, evaporative cooling systems and portable air conditioners can also be used to bring down the temperature. Ventilation is used in a factory to provide a healthy and safe working environment for employees and to remove or have control over contaminants released in an indoor work environment. The ventilation could be achieved by opening a window (natural) or using fans/blowers (mechanical means).



11- Al-Alamien Towers



The service panel is the central distribution point that connects the service wire or service drop—the main wire coming from the outside into the house—to the exit wires that split off and service different parts of the house. These exit wires are called branch circuits or branch wire circuits. The service panel is the central distribution point that connects the service wire or service drop—the main wire coming from the outside into the house—to the exit wires that split off and service different parts of the house. These exit wires are called branch circuits or branch wire circuits. installs, maintains, and repairs electrical systems in buildings and structures. we execute wiring plans, install fixtures and equipment, and ensure safety compliance. Electricians have expertise in various electrical systems, tools, and safety regulations.

12- Andulsia Hospital Alex



A package HVAC unit combines multiple units, such as an air conditioner and heater, into a single unit. The unit is usually placed outside. Split systems, on the other hand, divide each system into its own unit, so your heater and air conditioner are separate. FM200 is a synthetic/chemical fire suppression gas and extinguishes a fire by removing the free radicals or heat elements from the fire triangle. (Oxygen, Heat and Fuel). The typical concentration of an FM200 system is normally between 7.9% to 8.5%.



13- Lycee Theatre Downtown



Direct expansion, or DX cooling, uses the principles of thermodynamics to transfer heat from one area to another through the evaporation and condensation of a refrigerant, which serves as the medium through which heat is captured and removed from one area and released in another. Fire extinguishers apply an agent that will cool burning heat, smother fuel or remove oxygen so the fire cannot continue to burn. A portable fire extinguisher can quickly control a fire when applied by an individual properly trained.

14- Emmar Misr Mivida



air conditioning system into two individual units – one indoor and one outdoor. The outdoor unit houses the compressor and condenser components, while the indoor unit contains the distribution and filter components. Within the foundation of buildings, plumbing systems are the collection of carefully constructed piping networks that firstly, distribute drinking water (also called potable water) to basins, baths, showers & washing machines throughout the structure and secondly, safely dispose of wastewater into both the civil.

15- Dina Farms



Ventilation is mainly used to control indoor air quality by diluting and displacing indoor pollutants; it can also be used to control indoor temperature, humidity, and air motion to benefit thermal comfort, satisfaction with other aspects of the indoor environment, or other objectives.



16- June North Coast



An infrastructure project is a proposed plan to build, maintain, and upkeep infrastructural facilities, systems, and services. Building new roads, constructing new power plants, maintaining sewage systems, and providing drinking water to the public are all examples of infrastructure project



17- Lafarge Office Building 5th Settlement



Chilled water systems remove heat by passing recirculated cold water through equipment. They are often used in place of single-pass cooling because the water is recirculated, rather than being discharged, to the drain. The purpose of chillers, whether they're industrial or HVAC, is to move heat from one location and transport it to another place to chill. Chillers tend to use either water or another type of liquid to process it through the piece of equipment they're trying to chill. In a fire sprinkler system, the fire pump is an essential component. It provides access to high-pressure water in the fire sprinkler system, which serves to increase the rate of the flow of water. The sprinkler pump is a popular method of fire prevention in factories and power stations.

18- New Giza University



The air handling unit (AHU) is the heart of central air conditioning. It collects outside air and room air, removes dust and other particles from the collected air, adjusts the temperature and humidity and then supplies comfortable and refreshing air-conditioned air into the rooms through ducts. A fan coil unit (FCU) is a device used to heat or cool a room without the need for ductwork. It consists of an indoor coil, a fan and an outdoor condensing unit. CO₂ fire extinguishers contain only CO₂ gas (carbon dioxide) in a highly compressed format (55 bar pressure). CO₂ is inert, will evaporate without trace and suffocates fire by starving the fire of oxygen.

19- Mall Of Arabia



Building infrastructure refers to the construction of essential physical systems and facilities in a city or region, such as roads, bridges, water supply networks, and electricity grids. It aims to improve the overall functioning and quality of life in urban areas. An infrastructure project is a proposed plan that focuses on the improvement and upkeep of services, facilities and systems already in place throughout a country. Examples include improvements to communications equipment, transportation channels and electrical systems.



20- Hurghada City Center



Ring Main Unit (RMU) is a medium voltage, gas-insulated, fully sealed cabinet used to measure, connect, and integrate transformer protection functions with a fixed type breaker. Ring Main Units are safe, reliable, low-maintenance, and easy to replace switchgear. CCTV (closed-circuit television) is a TV system in which signals are not publicly distributed but are monitored, primarily for surveillance and security purposes. CCTV relies on strategic placement of cameras and private observation of the camera's input on monitors.

21- Zahra North Coast



Infrastructure is the basic physical system of a project and often involves the production of public goods or production processes. Examples of infrastructure include transportation systems, communication networks, sewage and water systems. Investments in infrastructure tend to be costly and capital-intensive, but vital to a project's economic development and prosperity.



22- SwanLake Compound



The two most common submerged pump installation types are free-standing pump installation and pump installation on an auto coupling. Submerged installation describes pumping equipment submerged in the wastewater in a wet well. Water from the inlet is pumped into the body when it is working. Water then enters the impeller part, rotates at high speed with the impeller, and then exits the pump body together with the impeller. A large amount of vacuum is created in the inlet port, and another working process begins. The number of stages is 7 and the delivery size is 32 mm. The type is open well. The submersible pumps are designed to be used in wet environments and are ideal for draining pools, ponds, and other areas that may be prone to flooding. Booster pumps will work without a pressure tank, as there are automatic pumps fitted with a constant pressure controller so these pumps start and start on demand. We recommend having a pressure tank particularly. Earthing is used to protect you from an electric shock. It does this by providing a path (a protective conductor) for a fault current to flow to earth. It also causes the protective device (either a circuit-breaker or fuse) to switch off the electric current to the circuit that has the fault. An irrigation system (pump, motor, pipeline, water application equipment) that fits project needs relative to water supply, irrigated acreage, crop rotations, labor requirements and the power supply. Irrigation system pressure requirements and sprinkler selection should be based on soil and topography.

23- Belle Vie Compound



To design the sprinkler system to deliver 100% overlap of the watered areas to eliminate dry spots. To achieve head-to-head overlap, make the distance between heads to be the sprinkler's radius. If the lawn has an odd shape, you can increase the inter-sprinkler spacing. The commonly used irrigation methods are surface, sprinkler, and drip irrigation. Each method has its own merits and demerits, depending on the soil, topography, type of crops, climate, water availability and quality, and investment, which are the guiding factors for selecting an adequate irrigation method. Infrastructure allows your project to physically function. It includes all the different systems a project on to meet their needs, from roadways and water to communications and waste management. Because of these facilities' widespread and near-constant use, they experience high levels of wear-and-tear compared to other types of construction projects. As a result, the materials and building methods used in infrastructure work are highly engineered for durability.

24- Elworoud Compound (KSA)



BMS systems are “Intelligent” microprocessor-based controller networks. installed to monitor and control a buildings technical systems and services. such as air conditioning, ventilation, lighting and hydraulics. • Scalable from just one device to thousands of devices. Building Management Systems (BMS) control and monitor the large energy consuming systems within a building, such as HVAC, lighting, fire and security systems. There are several kinds of solar panel mounting methods available, including- ground-mounted, roof-mounted, and pole-mounted. Every kind of mounting system includes a unique collection of brackets and hardware that are intended to work together to offer a strong and secure installation. Your installer will connect the solar panels to the inverter through a series of wires that will travel through your roof. The inverter will usually be placed in your loft, near the breaker panel, where it will take the DC power that the panels supply and convert it into useable AC electricity. An absorption chiller is a closed loop cycle that uses waste heat to provide cooling or refrigeration. This absorption cooling cycle relies on three basic principles: When a liquid is heated it boils (vaporizes) and when a gas is cooled it condenses. An absorption chiller normally has a condenser, a generator, an evaporator, an absorber, and a heat exchanger. First, the refrigerant, or the water mixed with lithium bromide, is stored in the absorber. It will be pumped through the heat exchanger and go to the generator tank at the top of the chiller.

25- Jayd Compound



An infrastructure project is a proposed plan that focuses on the improvement and upkeep of services, facilities and systems already in place throughout a project. Examples include improvements to communications equipment, transportation channels and electrical systems. Infrastructure Construction means construction renovation and maintenance of water work, electricity, communications, telecommunications, water drainage, carriage of petroleum by pipe, road, rail and other related activities which proceed on, under and above ground. An uninterruptible power supply (UPS) or uninterruptible power source is a type of continual power system that provides automated backup electric power to a load when the input power source or mains power fails. A whole-project generator provides more power... and you cannot install one yourself as a DIY job. You must call experienced electricians with a history of installing generators. You'll be happier, the process will go more smoothly, and more importantly, your new generator will function exactly the way it is supposed to.

SOME OF OUR CLIENTS





RETROFIT
CONSTRUCTION

CONTACT US

RETROFIT CONSTRUCTION COMPANY STRUCTURED FOR SUCCESS.

Address : Plot 1171, 9th Street, Mokattam , Cairo

Email : info@theretrofit.org

Tel : 0225075837 - 0225075910

Mob : 01280084888